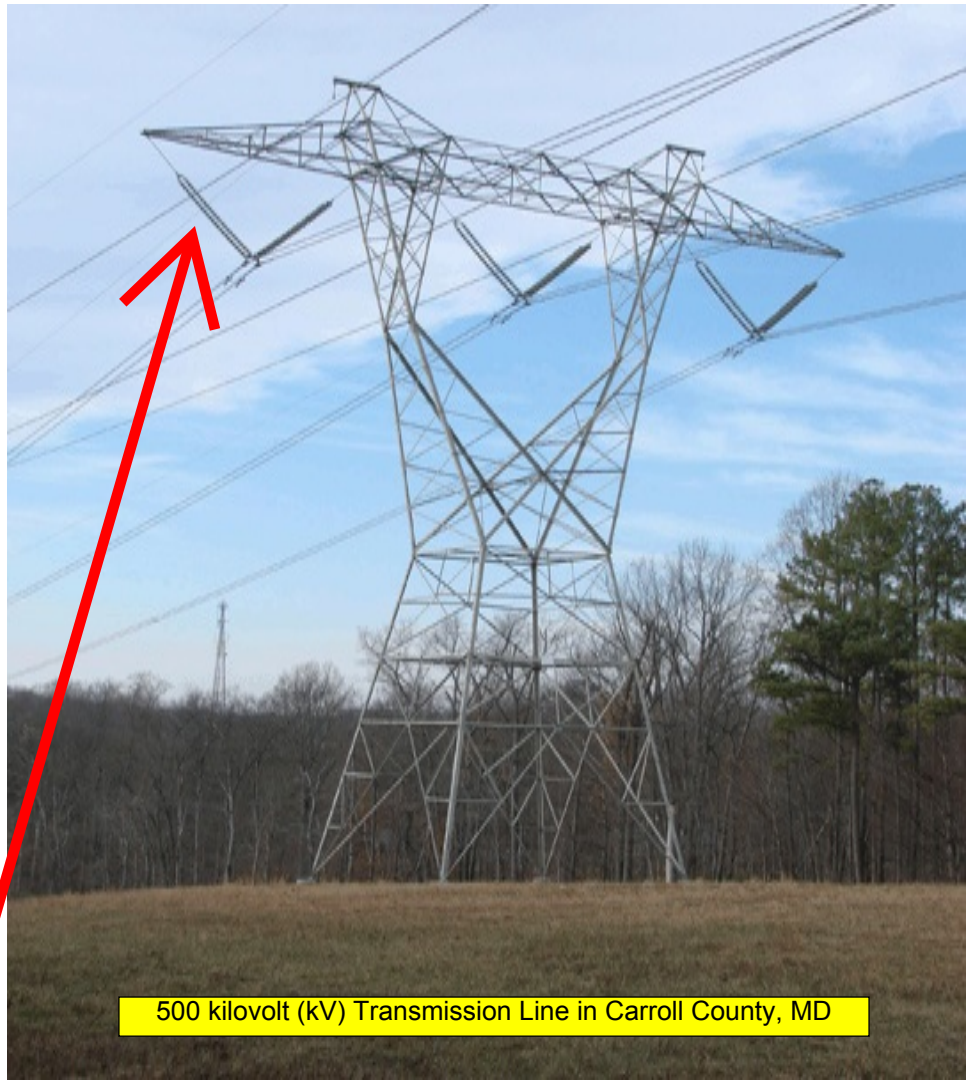
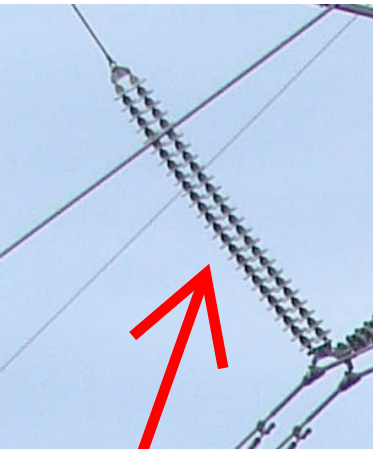


**How to Determine
Transmission Line
Voltage by Counting
Insulators**

Voltage	Insulators
69,000	4 - 5
115,000	6 - 8
138,000	8 - 10
230,000	12 - 16
500,000	24 - 28
765,000	30 - 35



500 kilovolt (kV) Transmission Line in Carroll County, MD



25 Insulators